



Residents Drop-In Session

161 Drury Lane

15th August 2024

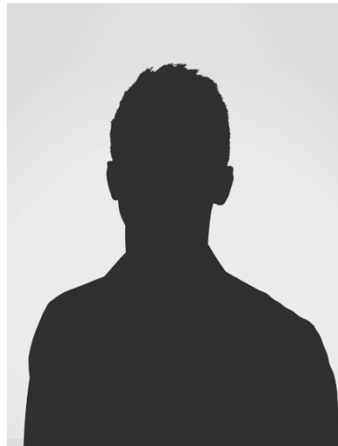
Introductions



PAUL MURRAY

Project Director

McAleer & Rushe



JACK BURTON

Supervisor

So Demolition



DONNA TEAGUE

*Environmental & Sustainability
Advisor*

McAleer & Rushe



KIM MCGINTY

Social Value Manager

McAleer & Rushe

WHAT WE DO





HISTORY

Founded in 1967 by Seamus McAleer who is still the active Chairman.

OVERVIEW

FOOTPRINT



1967

The beginning. Founded by Seamus McAleer & Jim Rushe.

1971

Eamonn Lavery joins the company. *Social Housing Era.*

1982

Evolution into Commercial Developments.

1995

Expansion into the Hotel Sector.

2000

Significant growth with Mixed-Use projects throughout the UK & Ireland.

2010

Recognised as one of the leading Design & Build Contractors in the UK.

2017

The company celebrates it's 50th Anniversary.

2024+

McAleer & Rushe continue to expand and grow, seeking new, exciting opportunities.





HISTORY

OVERVIEW

One of the largest Design & Build contractors in the UK.

FOOTPRINT

57+

YEARS OF SUCCESS

£400m+

ACTIVE CONTRACTS

360+

TALENTED STAFF

23

LIVE JOBS





HISTORY

OVERVIEW

FOOTPRINT

We have 23 active jobs across the
UK & Ireland.



Sectors

Hotel
Residential
Student Acc.
Office

Offices

London
Cookstown
Belfast
Dublin

PROJECT OVERVIEW



Client McAleer & Rushe

Start Date 2nd September 2024

End Date August 2025

Programme 11 months



PROJECT DESCRIPTION

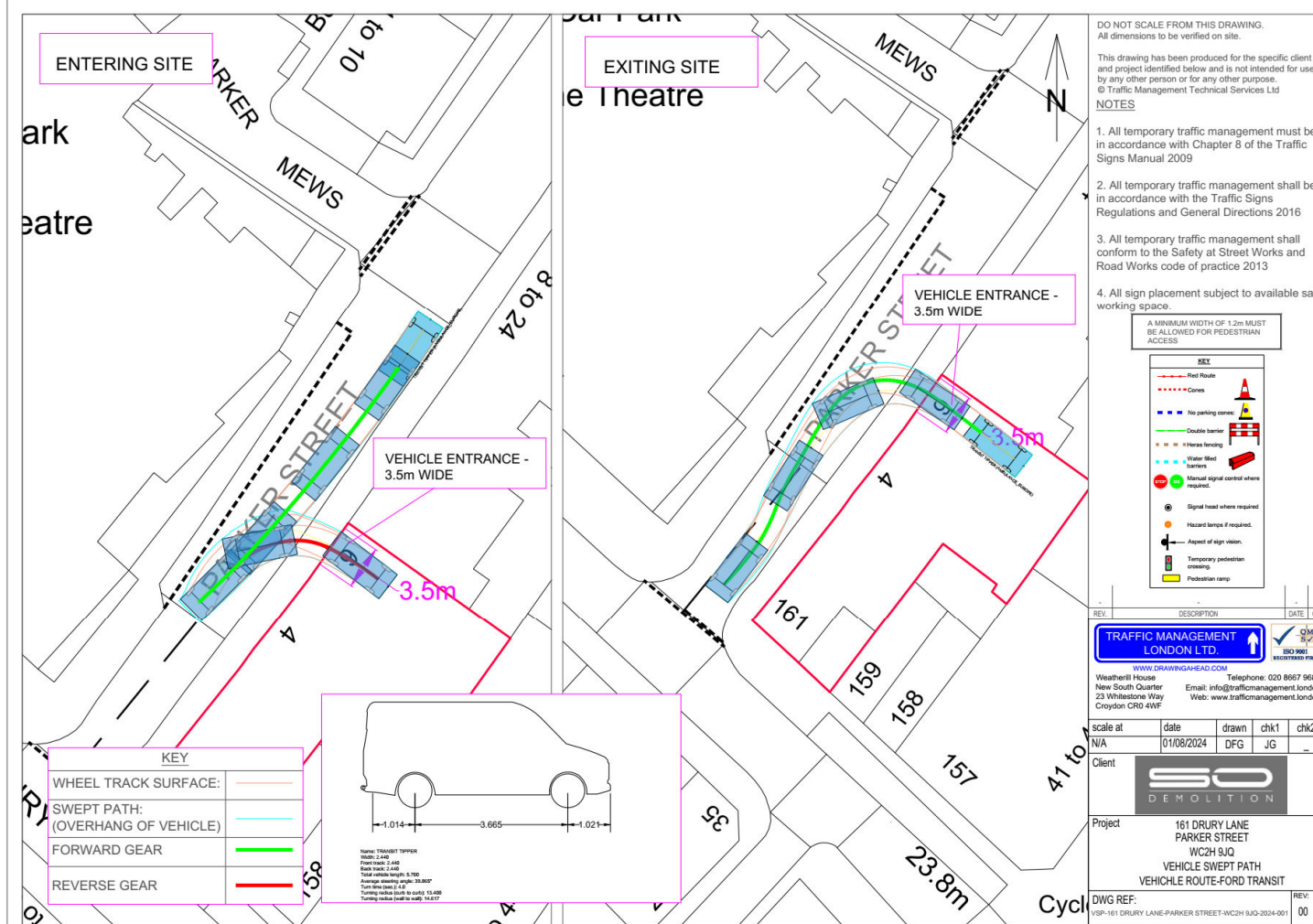
- McAleer and Rushe are proposing to refurbish the existing building. This includes replacement of the current 4th floor facade and adding a new 5th floor alongside alterations to the ground floor appearance. This is in order improve the quality of office space and the external appearance. This project will target a BREEAM Excellent rating, and a range of Sustainability features have been incorporated into the design.



SITE LOGISTICS



SITE LOGISTICS



ENVIRONMENTAL CONTROLS



ENVIRONMENTAL APPROACH

- Construction Environmental Management Plan in place for the project
- A Site Waste Management Plan will be implemented
- Monthly newsletters - with potentially disruptive upcoming activities identified
- Alternative low noise techniques to be considered over traditional
- Quietest available plant/ equipment emitting lowest vibration will be used where possible
- Machinery will not be permitted to be idle when not in use
- Plant to be operated with noise directed away from noise-sensitive receptors where possible
- All plant and machinery to be well maintained, regularly inspected and tested
- Specific techniques to be used to reduce impact of certain works if required
- Noise, Dust & Vibration monitoring with trigger limits set

SOCIAL IMPACT

- Educational engagement with local schools and colleges Employment of 5 placement engineers, 1 graduate engineer, and creation of 12 apprentice positions
- We will maximise local employment and procurement opportunities
- We will implement a range of community engagement initiatives to include volunteering and charity donations.
- The project is registered with the Considerate Constructor Scheme



S I T E O P E R A T I N G H O U R S

Site working hours

Monday to Friday: **08.00 -18.00**

Saturday: **08.00 –13.00**

No working on Sundays or bank holidays

Planned out-of-hours working

- Consented by the local authority
- Residents notified in advance

Unplanned out-of-hours working

Unplanned out-of-hours work will only occur in the rare instance of risk to operative safety or where an element of work has encountered unexpected issues and must be securely completed.

All efforts will be made to promptly notify residents via the opt-in email notification list.

To opt-in, please email:

Paul.murray@mcaleer-rushe.co.uk

COMMUNICATION



KEEPING YOU INFORMED

- **Monthly newsletter**
- **Regular resident meetings**
- **Opt-in email notifications:**
 - Unexpected out-of-hours working notifications
 - Special notices of planned and consented out-of-hours working

paul.murray@mcaleer-rushe.co.uk





Thank You
Any Questions?

Paul Murray

Project Director

paul.murray@mcaleer-rushe.co.uk